

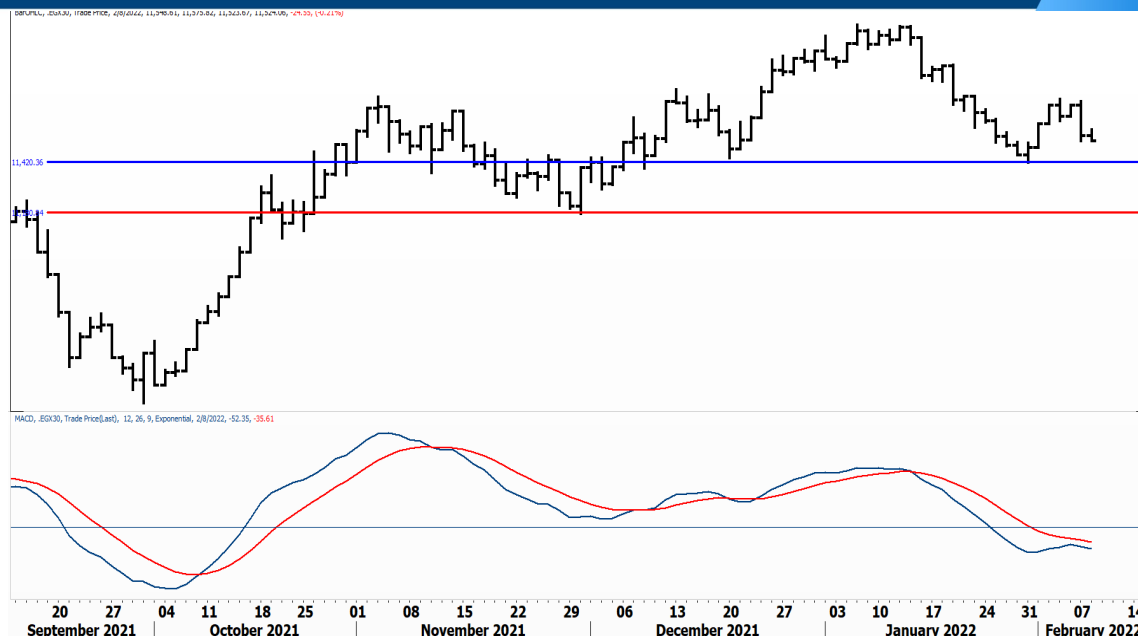


PIONEERSECURITIES

TECH TO THE POINT

9-Feb- 2022

This report must be read with the disclaimer
on the last page



Last	11,527.90
High Today	11,665.49
Low Today	11,590.25
Volume	M 68.226
First Support	11,400
Second Support	11,200
First Resistance	11,700
Second Resistance	12,000
Stop Loss	11,400
HISTORICAL RETURN %	
1 WEEK	-0.65%
1 MONTH	-3.76%
1 QUARTER	-0.52%
1 YEAR	0.04%
YTD	-3.53%

Analysis

If the EGX 30 does not rebound from current levels, the decline will be strong, especially if the 11,400 level is broken to the downside. Our stop is placed below 11,400 as a break below it will lead to a major breakdown below 11,200. If the latter level is violated on a weekly basis we will have a bearish 2022.

Let us look at the bright side of the picture and see if the index will be able to rebound from here or not. If a rebound takes place, our entry signal will be triggered at a break above 11,700.

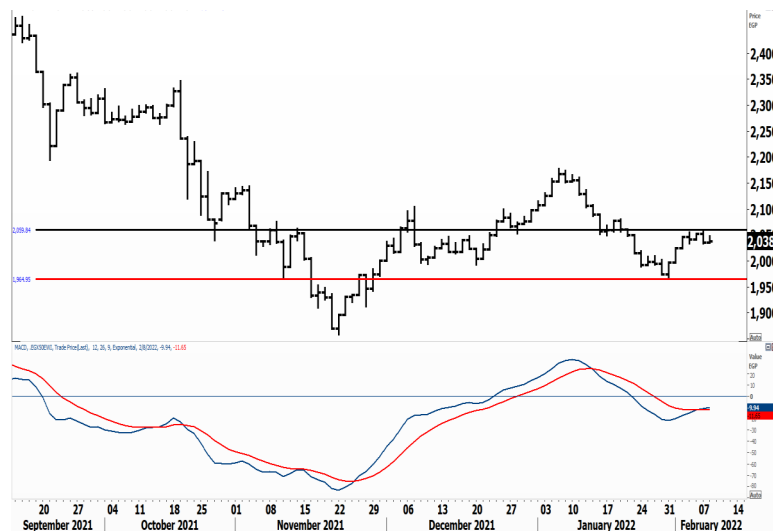
Egyptian Equal Weights Index .EGX 50

Analysis


Yesterday's session was actually non-existent as literally nothing happened.


We will look at the 2,050 level as a break above this level will lead to a short-term move to the 2,150 which will serve as a strong resistance.

Our stop will be set below 1,965, which is the recent bottom and a very important level to watch.



Resistance

HRHO  After it broke its resistance, HRHO's next target lies at 17. We expect a breakout above this level too which should lead the stock back to its twenties.


RREI  Closed at 0.86 after breaking 0.8 to the upside. Our target lies at 0.95. Those who want to step in after confirmation can wait for a breakout above 0.95.

Support


No stocks broke their support yesterday


Testing

Support

RMDA  Closed at 2.42 after rebounding from its support that lies near 2.32. If this rebound continues, RMDA can reach the 2.7 level which will be expected to serve as resistance.

Resistance

CANA  If CANA breaks 12 to the upside, a strong rise will follow, which will probably lead the stock near 14.5-15. Those who want to buy can enter at this breakout.

OFH  The 0.23 is our current minor resistance, followed by 0.235. For confirmation, we recommend waiting for the 0.235 breakout. Such a break will trigger an entry signal and our target will be set around 0.26.

Symbol	S. Description	Last	Buying Area 1	Buying Area 2	Selling Area 1	Selling Area 2	Selling Area 3	Stop Loss
AUTO.CA	GB AUTO S.A.E	5.55	5.4	5.60↑	5.71	5.85	6	5.15
RMDA.CA	TENTH OF RAMADAN FOR PHARMACEUTICAL	2.42	2.38	2.45↑	2.5	2.58	2.7	2.28
PHDC.CA	PALM HILL DEV CO	1.821	1.79	1.83↑	1.865	1.89	1.95	1.72
ATLC.CA	AT LEASE	4.84	4.75	4.89↑	4.99	5.15	5.35	4.55

N.B. please note that the levels are too close as these trading opportunities only suit T+0 speculators

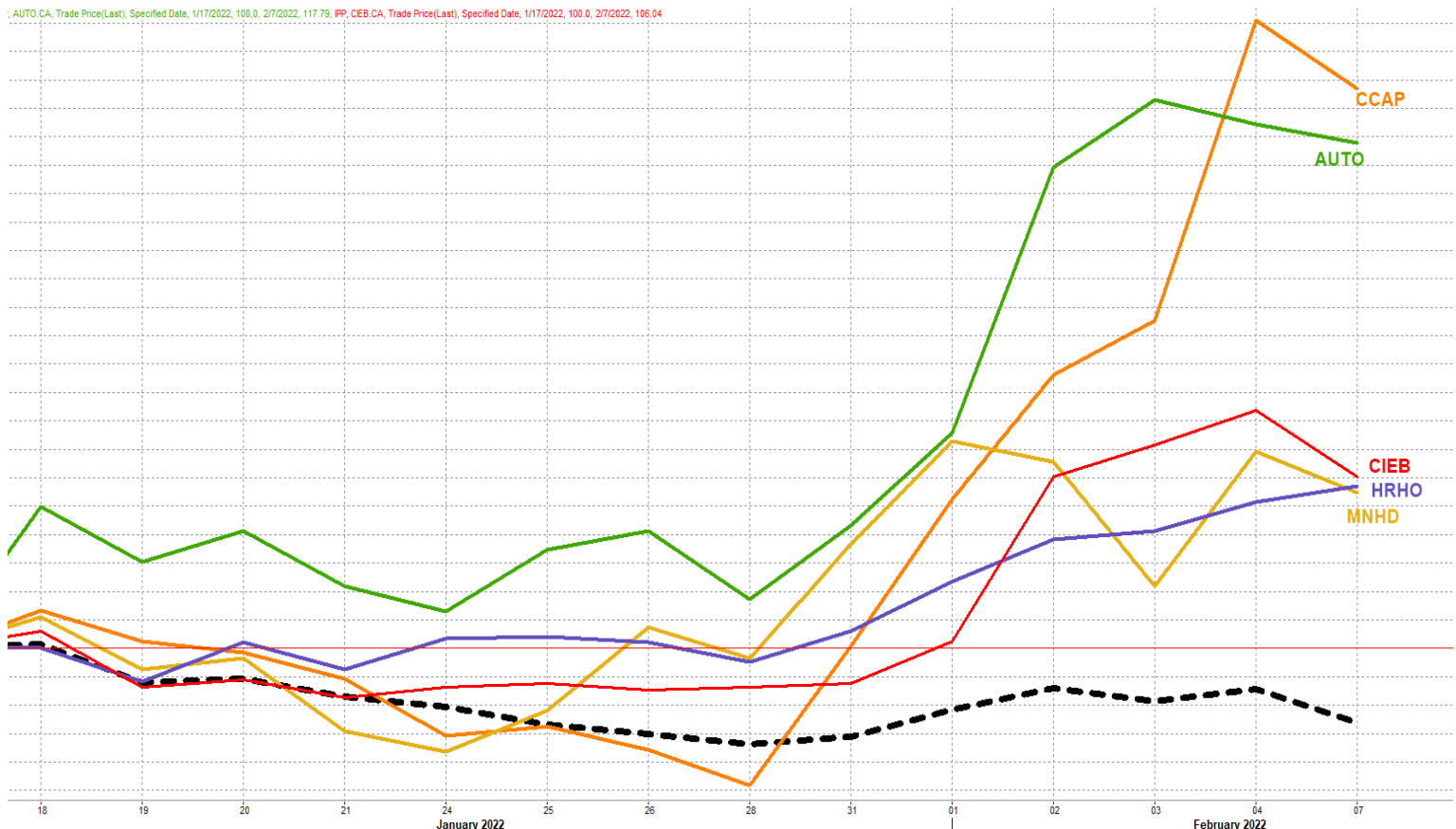
The prices that are accompanied by a green arrow in the above table show resistance levels. Thus, a break above these levels will pave the way to achieve one (or all) of the targets.

The area between buying area 1 and buying area 2 is a trading area.

<u>Yester- Trades</u>	<u>day's T+0/T+1</u>	Symbol	Hit first Target	Hit Second Target	Hit Third Target	Hit Stop Loss	Triggered Buy	No Action
★	★	PORT.CA					+2.07%	
★	★	ESRS.CA					+2.14%	
		RTVC.CA						★
		HELI.CA						★

Top 5 Performers

EGX 30 Stocks; Past 2 Weeks



Symbol	S. Description	Last	Support 1	Support 2	Resistance 1	Resistance 2	Trend	Recommendation	Stop Loss/ Re-Entry
COMI.CA	COM INTL BK/d	50.8	50.2	49	52.9	54.2	↔	Hold	50.2
FWRY.CA	FAWRY FOR BANKING TECHNOLOGY /d	9.45	9.50*	8.85	10.8	11.83	↓	P.Sell	10.8
ABUK.CA	ABU QIR FERTILIZERS /d	20.78	20.5	20	21.4	22.11	↔	Hold	20.5
EAST.CA	EASTERN CO/d	10.55	10.35	10.15	10.8	11.1	↔	Hold	10.35
HRHO.CA	EFG HERMES HOL/d	15.74	15.3	14.8	15.9	16.4	↑	Hold	14.8
TMGH.CA	TALAT MOSTAFA/d	9	8.5	8	9.3	9.7	↔	Hold	8.5
EKHO.CA	EGYPT KUWAIT H/d	1.39	\$1.38	\$1.35	\$1.41	\$1.465	↔	Hold	\$1.35
EFIH.CA	E-FINANCE FOR DIGITAL&FINANCIAL INVESTEMENTS	18.3	16.99	16.6	18.35	19.5	↔	Hold	16.6
SWDY.CA	ELSWEDY ELECTR/d	9.4	9.22	9	10	10.32	↔	Hold	9
ETEL.CA	TELECOM EGYPT/d	17.15	16.8	16.2	17.15*	17.55	↔	Hold	16.2
EKHOA.CA	EGYPT KUWAIT HOLDING CO	20.54	20	19.5	21.6	22.5	↔	Hold	19.5
CLHO.CA	CLEOPATRA HOSPITAL	4.93	4.75	4.62	4.95	5.2	↔	Hold	4.75
MFPC.CA	MISR FERTILIZERS PRODUCTION CO	88.06	88*	86	93	96	↔	Hold	88
CIEB.CA	CREDIT AGRICOL/d	8.54	8.5	8.3	9	9.5	↑	Hold	8.3
CIRA.CA	CAIRO FOR INVESTMENT AND REAL ESTATE	12.29	12.12	11.5	13.5	14.2	↓	Hold	13.5
HDBK.CA	HOUSING AND DEVELOPMENT BANK	43.51	42	38	46.5	48	↔	Hold	48
AMOC.CA	ALEXANDRIA MINERAL OILS CO/d	3.78	3.61	3.35	3.94	4.2	↔	Hold	3.61
ISPH.CA	IBNSINA PHARMA/d	3.74	3.68	3.62	3.92	4.1	↔	Hold	3.62
ESRS.CA	EZZ STEEL/d	13.95	13.3	12.9	14.2	15.14	↔	Hold	14.2
MNHD.CA	NASR CITY HOUSE/d	2.83	2.8	2.58	3.1	3.18	↔	Hold	2.58
HELI.CA	HELIOPOLIS/d	6.38	6.40*	6	7	7.4	↔	Hold	6
SKPC.CA	SIDI KERIR PET/d	7.66	7.22	7	7.65*	8.04	↑	Hold	7
AUTO.CA	AUTO GHABBOUR /d	5.55	5.3	5.17	5.7	6	↑	Hold	5.17
PHDC.CA	PALM HILL DEV /d	1.821	1.69	1.65	1.83	1.88	↔	Hold	1.65
ORAS.CA	ORASCOM CONSTRUCTION	73.51	71	68	74	79	↔	Hold	68
ORWE.CA	ORIENTAL WEAVERS /d	8.53	8.4	8.15	8.75	9.4	↔	Hold	8.15
MTIE.CA	MM GROUP FOR INDUSTRY /d	7.1	7.05	6.75	7.6	8.1	↔	Hold	6.75
CCAP.CA	CITADEL CAPITA/d	1.448	1.36	1.286	1.52	1.6	↑	Hold	1.286
ORHD.CA	ORASCOM EGYPT/d	5.46	5.4	5.2	5.9	6.13	↔	Hold	5.2
RMDA.CA	TENTH OF RAMADAN FOR PHARMACEUTICAL	2.42	2.2	2.04	2.45	2.55	↔	Hold	2.46
ADIB.CA	ABU DHABI ISLAMIC BANK EGYPT	13.5	11.87	11.22	13.50*	14	↓	Hold	13.5

Guidelines



Bullish



Bearish



Neutral

Trend: (Upgrade, Downgrade): Change in trend color refers to upgrade or downgrade in the trend relative to the previous trend direction. E.g. change from "↓ Down" to "↔ Flat" is considered an upgrade and vice versa.

Buy: Buy the full position.

P.Buy: Buy portion of a position

Hold: Don't Buy or sell.

P.SELL: Sell portion of a position.

Sell: Sell the full position.

Stop Loss: Completely exit the position (or) Re-entry in cases of Selling.

Disclaimer

This report has been prepared according to the general data available for public, in accordance with the professional standards applied in that career to the best knowledge of the reporter. The recommendations mentioned are a guiding tool representing a professional opinion, and not granting any profits, consequently it is not obligatory for our valued customers and investors. Pioneers Securities©, Egypt shall not be liable for any direct, indirect, incidental, or consequential damages, including limitation losses, lost revenues, or lost profits that may result from these materials. Republishing this report or any of its contents is subject to prior approval; referring to the source is a must. Opinions expressed are subject to change without notice and may differ or be contrary to the opinions or recommendations of Pioneers Securities©, Egypt Research or the opinions expressed by other business areas or groups of Pioneers Securities©, Egypt as a result of depending solely on the historical technical behavior (price and volume).

Technical Analysis Department

Saleh Nasser

Chief Technical Strategist

Ahmed Hassan

Senior Technical Analyst

Dina Fahmy

Senior Technical Analyst

Tips on reading the report

The first page includes an analysis of two major indices in the Egyptian Stock Market; the norm is that we will analyze both the EGX 30 and 70, but sometimes we will compare the EGX 30 to its 50 counterpart if there is important information in this comparison. We also use the Hermes Last Index interchangeably with the EGX 30. The .HRMSL index has an important edge; it uses last prices instead of VWAP. First thing our clients should do is to read the indices analysis carefully to have a clear understanding on our overall view.

The second page includes stocks that broke out beyond their resistance levels, and those that violated their support levels. It also includes stocks that are testing their support levels and those that are testing their resistance. This analysis is important and it is the core of our recommendations. It is important to note though that not all stocks that are testing their support levels are bullish, and not all that are testing their resistance levels are bearish. To make it easier for our clients, we have placed a bull face 🐂 if we consider the stock under study bullish, and a bear face 🐻 if we consider it bearish. We also added a big bullet 🟩 if we are neutral.

It is important to note that you might find a stock that we consider bullish in our analysis (in the breakouts/testing section) but it remains as a hold or partial sell in the table. The conflict here is that the table is more conservative. This will not be an issue with our clients, because our analysis will explain why we are being bullish/bearish on the stock.